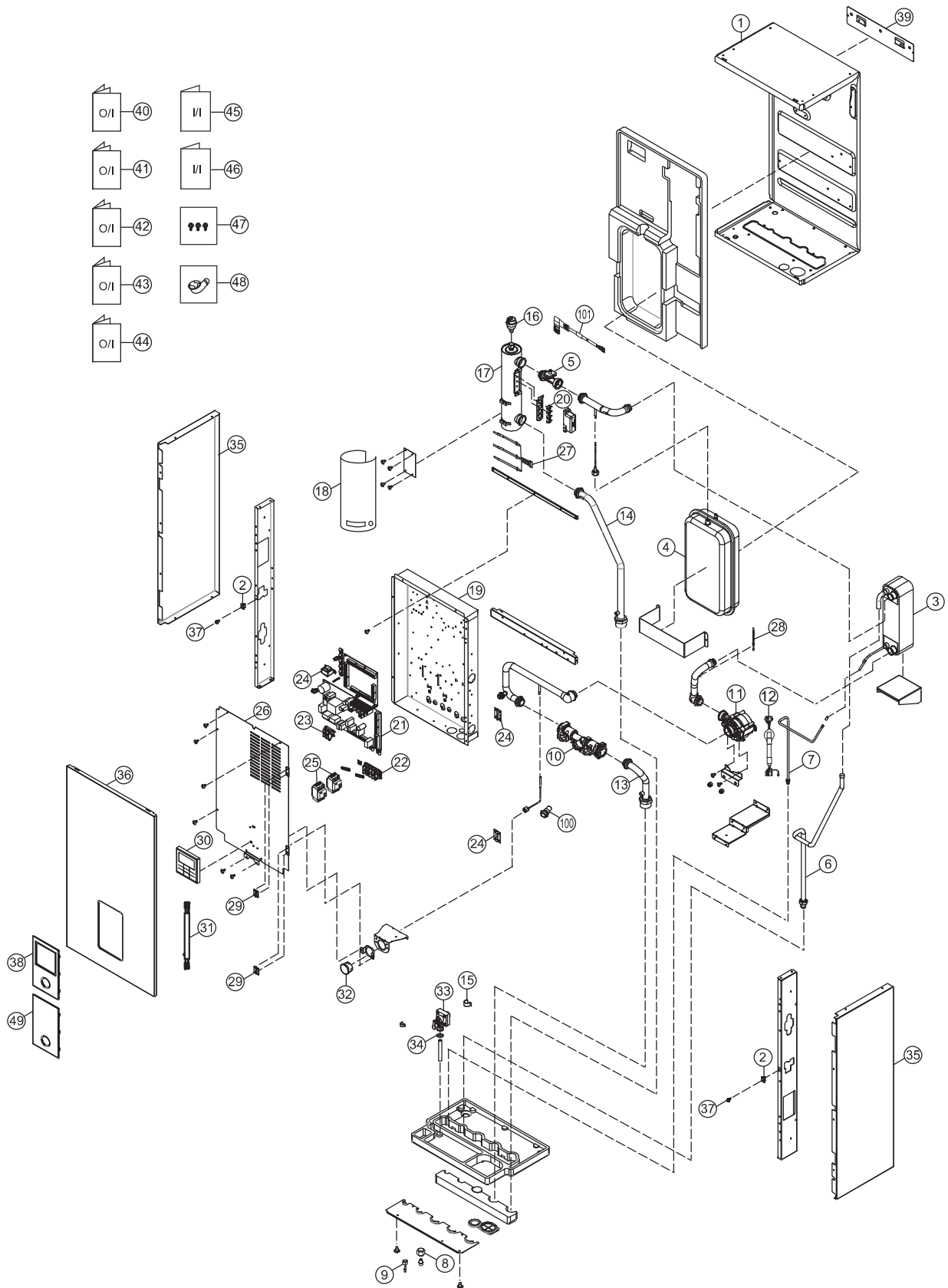


19. Exploded View and Replacement Parts List

19.1 Indoor Unit



Note:

- The above exploded view is for the purpose of parts disassembly and replacement.
- The non-numbered parts are not kept as standard service parts.

<Model: WH-SQC09H3E8 >

SAFETY	REF. NO.	DESCRIPTION & NAME	QTY.	WH-SQC09H3E8	REMARK
	1	BASE PAN	1	CWD521450	
	2	CATCHER	2	CWH601011	
	3	HOT WATER COIL - COMPLETE	1	ACXB90C00220	
	4	RECEIVER	1	CWB141073	
⚠	5	FLOW SENSOR	1	CWB621137	O
	6	TUBE CONNECTOR - COMPLETE (1)	1	ACXT00C03860	
	7	TUBE CONNECTOR - COMPLETE (2)	1	ACXT00C03870	
	8	FLARE NUT (3/8)	1	CWT251064	
	9	FLARE NUT (5/8)	1	CWT251063	
	10	FILTER COMPLETE	1	CWB51C1021	
⚠	11	WATER PUMP	1	CWB532116	
	12	LEAD WIRE (WATER PUMP TO PCB)	1	ACXA60C06140	
	13	TUBE CONNECTOR - COMPLETE (3)	1	CWT01C7166	
	14	TUBE CONNECTOR - COMPLETE (4)	1	CWT01C7168	
	15	RETAINING RING D: 22mm	1	CWH581007	
	16	AIR PURGE VALVE	1	ACXB62-00130	O
⚠	17	HEATER ASS'Y	1	ACXA34K00080	
	18	SOUND PROOF MATERIAL	1	ACXG30-00680	
	19	CONTROL BOARD	1	CWH102629	
⚠	20	THERMOSTAT	4	CWA151074	O
⚠	21	ELECTRONIC CONTROLLER - MAIN	1	ACXA73C21840	O
⚠	22	TERMINAL BOARD ASS'Y (1, 2, 3)	1	CWA28K1240	O
⚠	23	TERMINAL BOARD ASS'Y (A, B)	1	CWA28K1260	O
⚠	24	REACTOR	1	G0C103Z00003	O
⚠	25	RESIDUAL CURRENT CIRCUIT BREAKER	2	K5KYYAY00003	O
	26	CONTROL BOARD COVER	1	CWH131692	
	27	SENSOR - COMP. (WATER IN, OUT & REF TEMP CN-TH1)	1	CWA50C3377	O
	28	SENSOR - COMP. (HEX WATER OUTLET TEMP CN-TH3)	1	CWA50C3378	O
	29	HINGE	2	CWH611007	
	30	REMOTE CONTROL COMPLETE	1	CWA75C4682	O
	31	LEADWIRE REMOTE CONTROL 700mm	1	CWA68C2284	
	32	PRESSURE GAUGE	1	CWB070003	O
	33	PRESSURE RELIEF VALVE	1	CWB621136	O
	34	PACKING	2	CWB811195	
	35	CABINET SIDE PLATE	2	CWE041850A	
	36	CABINET FRONT PLATE	1	CWE061396A	
	37	LOCK	2	CWH891004	
	38	DECORATION BASE ASS'Y	1	CWE35K1285	
	39	INSTALLING HOLDER	1	CWH361103A	
	40	OPERATING INSTRUCTION	1	ACXF55-05780	
	41	OPERATING INSTRUCTION	1	ACXF55-05790	
	42	OPERATING INSTRUCTION	1	ACXF55-05800	

SAFETY	REF. NO.	DESCRIPTION & NAME	QTY.	WH-SQC09H3E8	REMARK
	43	OPERATING INSTRUCTION	1	ACXF55-05810	
	44	OPERATING INSTRUCTION	1	ACXF55-05820	
	45	INSTALLATION INSTRUCTION	1	ACXF60-06280	
	46	INSTALLATION INSTRUCTION	1	ACXF60-03140	
	47	ACCESSORY - COMPLETE (SCREW)	1	CWH82C1754	
	48	ACCESSORY - COMPLETE (L - TUBE)	1	CWG87C900	
	49	ACCESSORY - CO. (DECORATION BASE)	1	CWH82C2174	
	100	FILTER COMPLETE	1	ACXB51-00080	
	101	LEADWIRE CN - FLWSEN	1	CWA68C2281	

Note:

- All parts are supplied from PHVACCZ, Czech (Vendor Code: 00029407).
- "O" marked parts are recommended to be kept in stock.

<Model: WH-SQC12H9E8 WH-SQC16H9E8>

SAFETY	REF. NO.	DESCRIPTION & NAME	QTY.	WH-SQC12H9E8	WH-SQC16H9E8	REMARK
	1	BASE PAN	1	CWD521450	←	
	2	CATCHER	2	CWH601011	←	
	3	HOT WATER COIL - COMPLETE	1	ACXB90C00220	←	
	4	RECEIVER	1	CWB141073	←	
⚠	5	FLOW SENSOR	1	CWB621137	←	O
	6	TUBE CONNECTOR - COMPLETE (1)	1	ACXT00C03860	←	
	7	TUBE CONNECTOR - COMPLETE (2)	1	ACXT00C03870	←	
	8	FLARE NUT (3/8)	1	CWT251064	←	
	9	FLARE NUT (5/8)	1	CWT251063	←	
	10	FILTER COMPLETE	1	CWB51C1021	←	
⚠	11	WATER PUMP	1	CWB532116	←	
	12	LEAD WIRE (WATER PUMP TO PCB)	1	ACXA60C06140	←	
	13	TUBE CONNECTOR - COMPLETE (3)	1	CWT01C7166	←	
	14	TUBE CONNECTOR - COMPLETE (4)	1	CWT01C7168	←	
	15	RETAINING RING D: 22mm	1	CWH581007	←	
	16	AIR PURGE VALVE	1	ACXB62-00130	←	O
⚠	17	HEATER ASS'Y	1	ACXA34K00090	←	
	18	SOUND PROOF MATERIAL	1	ACXG30-00680	←	
	19	CONTROL BOARD	1	CWH102629	←	
⚠	20	THERMOSTAT	4	CWA151074	←	O
⚠	21	ELECTRONIC CONTROLLER - MAIN	1	ACXA73C21850	ACXA73C21860	O
⚠	22	TERMINAL BOARD ASS'Y (1, 2, 3)	1	CWA28K1240	←	O
⚠	23	TERMINAL BOARD ASS'Y (A, B)	1	CWA28K1238	←	O
⚠	24	REACTOR	1	G0C103Z00003	←	O
⚠	25	RESIDUAL CURRENT CIRCUIT BREAKER	2	CWA181008	←	O
	26	CONTROL BOARD COVER	1	CWH131692	←	
	27	SENSOR - COMP. (WATER IN, OUT & REF TEMP CN-TH1)	1	CWA50C3377	←	O
	28	SENSOR - COMP. (HEX WATER OUTLET TEMP CN-TH3)	1	CWA50C3378	←	O
	29	HINGE	2	CWH611007	←	
	30	REMOTE CONTROL COMPLETE	1	CWA75C4682	←	O
	31	LEADWIRE REMOTE CONTROL 700mm	1	CWA68C2284	←	
	32	PRESSURE GAUGE	1	CWB070003	←	O
	33	PRESSURE RELIEF VALVE	1	CWB621136	←	O
	34	PACKING	2	CWB811195	←	
	35	CABINET SIDE PLATE	2	CWE041850A	←	
	36	CABINET FRONT PLATE	1	CWE061396A	←	
	37	LOCK	2	CWH891004	←	
	38	DECORATION BASE ASS'Y	1	CWE35K1285	←	
	39	INSTALLING HOLDER	1	CWH361103A	←	

SAFETY	REF. NO.	DESCRIPTION & NAME	QTY.	WH-SQC12H9E8	WH-SQC16H9E8	REMARK
	40	OPERATING INSTRUCTION	1	ACXF55-05780	←	
	41	OPERATING INSTRUCTION	1	ACXF55-05790	←	
	42	OPERATING INSTRUCTION	1	ACXF55-05800	←	
	43	OPERATING INSTRUCTION	1	ACXF55-05810	←	
	44	OPERATING INSTRUCTION	1	ACXF55-05820	←	
	45	INSTALLATION INSTRUCTION	1	ACXF60-06280	←	
	46	INSTALLATION INSTRUCTION	1	ACXF60-03140	←	
	47	ACCESSORY - COMPLETE (SCREW)	1	CWH82C1754	←	
	48	ACCESSORY - COMPLETE (L - TUBE)	1	CWG87C900	←	
	49	ACCESSORY - CO. (DECORATION BASE)	1	CWH82C2174	←	
	100	FILTER COMPLETE	1	ACXB51-00080	←	
	101	LEADWIRE CN - FLWSEN	1	CWA68C2281	←	

Note:

- All parts are supplied from PHVACCZ, Czech (Vendor Code: 00029407).
- “O” marked parts are recommended to be kept in stock.